

Staff

<i>Headteacher</i>	<i>Karen Middlemore</i>
<i>Class 2 Teachers</i>	<i>Angela Praed Karen Middlemore</i>
<i>Class 1 Teacher</i>	<i>Kerry Crinks</i>
<i>Higher Level Teaching Assistant</i>	<i>Linda Davison</i>
<i>Teaching Assistants</i>	<i>Mel Woodcock Jenna Foster</i>
<i>School Secretary</i>	<i>Julie Headdon</i>
<i>Site Supervisor</i>	<i>Angie Smith</i>
<i>Lunchtime Supervisors</i>	<i>Mel Woodcock Carol Perryman</i>

Term & Holiday Dates

INSET Day - Mon 5th September 2016

Autumn Term 1

Tues 6th September - Wed 19th October 16

INSET Day - Thurs 20th October 2016

INSET Day - Fri 21st October 2016

Autumn Term 2

Mon 31st October - Fri 16th December 16

Spring Term 1

Tues 3rd January - Fri 10th February 17

INSET Day - Mon 20th February 17

Spring Term 2

Tues 21st February - Fri 31st March 17

Summer Term 1

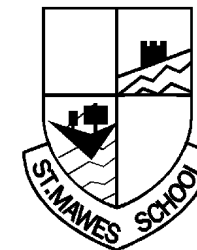
Tues 18th April - Fri 26th May 2017

May Bank Holiday - Mon 1st May 17

Summer Term 2

Mon 5th June - Tues 25th July 2017

INSET Day - Wed 26th July 17



Head Teacher

Karen Middlemore

Chair of Governors

Miles Carden

E-mail: secretary@st-mawes.cornwall.sch.uk

CALENDAR
2016 - 2017

AUTUMN TERM 2016

SEPTEMBER 2016

- 5th **INSET DAY - SCHOOL CLOSED**
- 6th Term starts for pupils
- 19th Clubs start
- 27th Open evening for Yr 6 at the Roseland

OCTOBER 2016

- 11th Parent Consultations (1.00 - 6.00pm)
- 19th Break up for half term - 3.10pm
- 20th **INSET DAY - SCHOOL CLOSED**
- 21st **INSET DAY - SCHOOL CLOSED**
- 31st Term starts for pupils



NOVEMBER 2016

- 18th Children in Need

DECEMBER 2016

- 13th Class 1 Nativity - 5.30pm
- 14th Christmas lunch in school
- 15th Christmas Party Day
- 16th Break up for Christmas - 1.30pm



SPRING TERM 2017

JANUARY 2017

- 3rd Term starts for pupils
- 9th Clubs start
- 12th Swimming starts for Year 3 and 4 (plus Year 5 and 6 who can't swim 25 metres)

FEBRUARY 2017

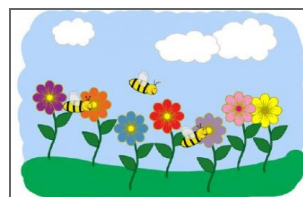
- 6th Practise tests for Year 2 upwards all week
- 10th Break up for half term - 3.10pm
- 20th **INSET DAY - SCHOOL CLOSED**
- 21st Term starts for pupils
- 28th Parent Consultations (1.00 - 6.00pm)

MARCH 2017

- 6th London Residential (Yr 4, 5 & 6)
- 7th London Residential (Yr 4, 5 & 6)
- 8th London Residential (Yr 4, 5 & 6)
- 9th London Residential (Yr 4, 5 & 6)
- 23rd Last swimming session
- 24th Red Nose Day
- 30th End of term assembly - 2.00pm
- 31st Break up for Easter - 1.30pm

APRIL 2017

- 18th Term starts for pupils
- 24th Clubs start



SUMMER TERM 2017

MAY 2017

- 1st **BANK HOLIDAY - SCHOOL CLOSED**
- 8th Yr 6 Test week (TBC)
- 15th Yr 2 Test week
- 22nd Yr 3,4 and 5 Test week
- 26th Break up for half term - 3.10pm

JUNE 2017

- 5th Term starts for pupils
- 8th Barbecue and sleep over for Year 2 and 3
- 9th Activity Day for Year 2 and 3
- 12th Year 1 Phonics test week
- 19th Sports Day - 1.30pm
- 20th Reserve Sports Day - 1.30pm
- 27th Yr 6 welcome day at the Roseland

JULY 2017

- 7th Pupil Reports to Parents
- 12th Open Evening (3.15pm - 4.15pm)
- 20th Class 2 Production - 6.00pm
- 24th End of Term/Leavers' Assembly - 2.00pm
- 25th Break up for Summer - 1.30pm
- 26th **INSET DAY - SCHOOL CLOSED**



If these dates need to be altered or additional ones added, we will inform you on our newsletter